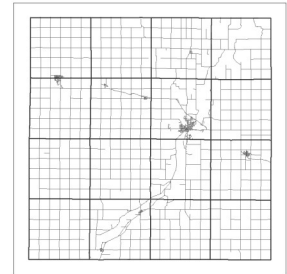
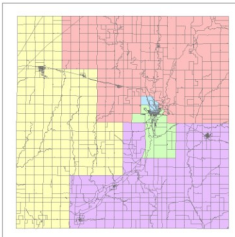
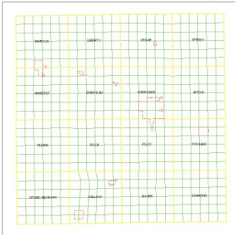




Cherokee County Available GIS Layers

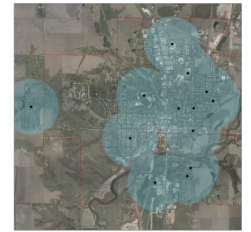
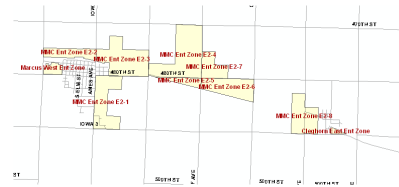
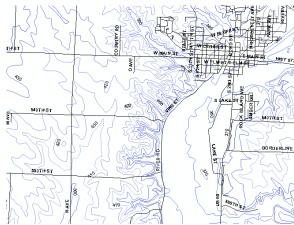
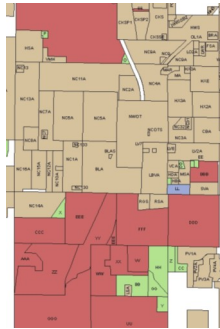
Boundaries/Districts

- City of Cherokee Wards
- College Education Districts
- Corporate Limits
- Quarter Sections
- School Districts
- Sections
- Subdivisions
- Supervisor Districts
- Townships
- Voting Precincts
- Zip Code Areas



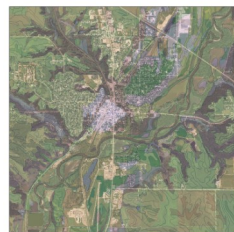
Others

- Aerial Imagery
- Cemetery Locations
- Churches
- County Roads
- Daycare Centers (registered)
- Voting Locations



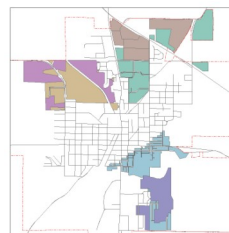
Conservation

- Park Lands
- Rivers & Streams
- Soils
- Topography
- Water Bodies



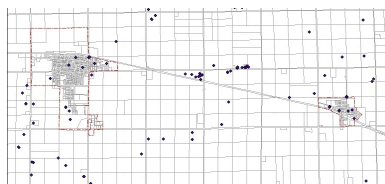
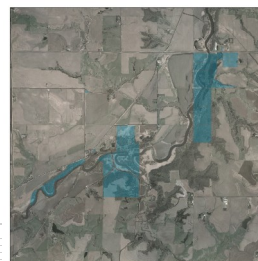
Property Information

- Address
- County Owned Property
- Enterprise Zones
- Landuse
- Property Numbers
- Property Owners
- Tax Districts
- Tiff Districts
- Zip Code Areas



Emergency Management & Environmental Health

- ESN Ambulance
- ESN Fire
- ESN Police
- Flood Zones
- Special Needs
- Wells—for inspection



Cherokee County GIS/IT Department
 520 W Main, Drawer A | Cherokee, IA 51012
 Lindsay Bressler | GIS/IT Coordinator
 P- (712) 225 6999 F- (712) 225 6999
 LBressler@co.cherokee.ia.us